

THE FRIENDLY VOICE

January/February 2018



LANGHORNE UNITED METHODIST CHURCH

301 E. Maple Ave.,

Langhorne, PA 19047

(215) 757-4984

lumc-online.org

January 2018

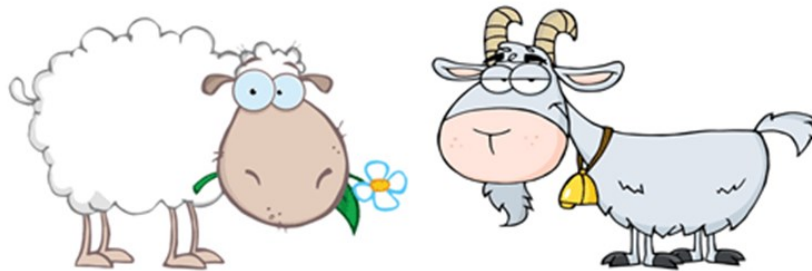
Greetings! Happy and Blessed New Year!

We started off our calendar year in church with the Reaffirmation of Faith and the Renewal of Our Baptismal Vows. Part of that covenant between each other as members of Christ's holy Church and between us and God is to "faithfully participate in the ministries of the church by our prayers, our presence, our gifts, our service, and our witness that in everything God may be glorified through Jesus Christ."

We often direct our "new year" thoughts of change and improvement toward those things like weight loss, less drinking, more time with family and friends, get a new job, etc.; but not very many people think of church, God, and service to others.

Prayers, presence, gifts, service, and witness are all components of good stewardship of God's creation. They are the manifestations of Christ's Greatest Commandments, loving God and loving each other. They are love in action.

My friends, as we worry about how we look and feel physically, or appear socially to those people we label as "important," think about how we look to God. Then think about how your prayers, presence, gifts, service, and witness affect the ministries of the church. Are they plentiful and helpful, or lacking and hurtful? Are you a sheep or a goat (Matt. 25:31-46)?



When you decide to be or remain (as the case may be a sheep, you will see how increasing your prayers, presence, gifts, service, and witness really does change your life AND the life of the church! All the things you need to do will come a bit easier with that better relationship with God and Christ's holy Church. It will change this United Methodist Church here in Langhorne! Finances will increase, attendance in services and programs will increase, faith will increase, discipleship will increase, and the kingdom of God will increase. Love begets love begets love...

Love changes everything.

God changes everything.

Have a wonderful new year in Christ's holy Church!

Peace and Grace,

Laurie, your pastor

Rev. Laurie J. Pfahler

JANUARY/FEBRUARY 2018 SANCTUARY SERVANTS

January 21

Worship Assistant, 9:30.....Dolores Chemey
Greeters, 9:30.....Madge Laughlin & Tim Eick
Ushers 9:30Ron & Louise Cookson
Contemporary Assistants, 11:00Bev Eick & Carol Annucci

January 28

Worship Assistant, 9:30.....Jeannette Hesser
Greeters, 9:30.....,.....Stan & Connie Dettman
Ushers 9:30 Bob & Cheryl Fryer
Contemporary Assistants, 11:00Raab Family

February 4

Worship Assistant, 9:30.....Jerry Hill
Greeters, 9:30..... Robyn & Jeff Rowlands
Ushers 9:30 Paul & Jackie Hansen
Contemporary Assistants, 11:00Daeche Family

February 11

Worship Assistant, 9:30.....Barbara Jordan
Greeters, 9:30..... MaryBeth States
Ushers 9:30Stacy & Tami Lewis
Contemporary Assistants, 11:00 Curtin Family

February 18

Worship Assistant, 9:30.....Linda Rutledge
Greeters, 9:30..... June & Bill Gill
Ushers 9:30Sam & Joan Phillips
Contemporary Assistants, 11:00 Boyle Family

February 25

Worship Assistant, 9:30.....Erika Paton
Greeters, 9:30.....Joe & Diane Wachstetter
Ushers 9:30Smigiel Family
Contemporary Assistants, 11:00Tyler Family

Langhorne United Methodist Church

Feb 2018 (Eastern Time)

Sun	Mon	Tue	Wed	Thu	Fri	Sat
28	29	30	31	1	2	3
9:30am - Sun. Sch. 9:30am - Traditional 11am - Contemporar 6:30pm - Bell Choir 6:30pm - Youth	5pm - Brownies 7pm - Trustee's Mtg.	7pm - Bucks Mt.	6pm - Girl Scouts 6:30pm - Choir	7am - Men's Brk. 6:30pm - Confirm 7pm - Praise Team	10am - Steeple Kids	8:30am - Men Min.
4	5	6	7	8	9	10
9:30am - Sun. Sch. 9:30am - Traditional 11am - Contemporar 6:30pm - Bell Choir 6:30pm - Youth	7pm - Finance Mtg.	7pm - Bucks Mt. 7pm - SPR MTG. 7pm - UMW	6pm - Girl Scouts 6:30pm - Choir	7am - Men's Brk. 6:30pm - Confirm 7pm - Praise Team		7:30am - Men Brk. @ 10am - Missions &
11	12	13	14	15	16	17
9:30am - Sun. Sch. 10am - One Service 11am - Stewardship 6:30pm - Bell Choir 6:30pm - Youth	4:30pm - Brownies 5:30pm - Stewardshi	7pm - Bucks Mt. 7pm - Steeple Kids	6pm - Girl Scouts 6:30pm - Choir	7am - Men's Brk. 6:30pm - Confirm 7pm - Praise Team		8am - Youth 30 Hr. 8:30am - Men Min.
18	19	20	21	22	23	24
9:30am - Sun. Sch. 9:30am - Sun. Sch. 9:30am - Traditional 11am - Contemporar 6:30pm - Bell Choir 6:30pm - Youth	6pm - Shared Meal 7pm - Bucks Mt. 8pm - Bucks Mt.	7pm - Bucks Mt.	6pm - Girl Scouts 6:30pm - Choir	7am - Men's Brk. 6:30pm - Confirm 7pm - Praise Team		
25	26	27	28	1	2	3
8am - Youth 30 Hr. 9:30am - Sun. Sch. 9:30am - Traditional 11am - Contemporar 6:30pm - Bell Choir 6:30pm - Youth		7pm - Bucks Mt.	6pm - Girl Scouts 6:30pm - Choir			



January and February Children's Sunday School Schedule 2018

1/7/18	The Three Wise Men	
1/14/18	The Trip to Egypt	
1/21/18	Jesus and the Children	Matthew 19:13-15
1/28/18	A Boy's Lunch	John 6:1-15
2/4/18	Jesus Walks on Water	John 6:16-25
2/11/18	The Four Friends	Mark 2:1-12
2/18/18	Jesus Calms the Storm	Mark 4:35-41
2/22/18	Jairus's Daughter	Mark 5:21-24,35-43

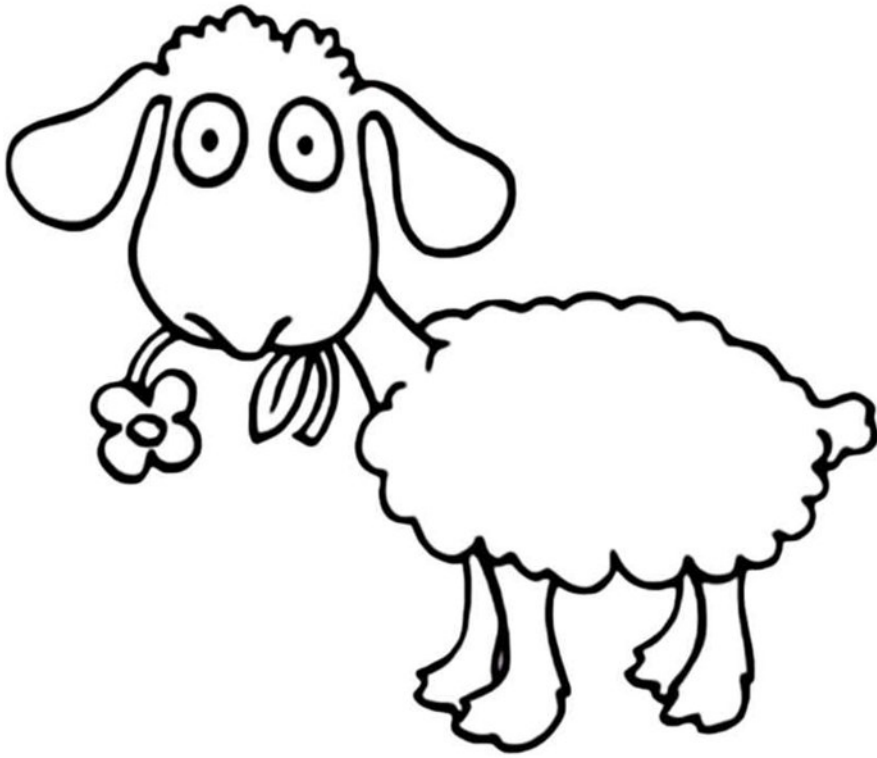
We are excited to begin our new curriculum from Cokesbury the Methodist Publisher. It is called Deep Blue and the lessons are built around stories about Jesus!

If anyone would like to help with Sunday School please contact Holly Rogerson at 267-879-5547 or hcrogerson@gmail.com.

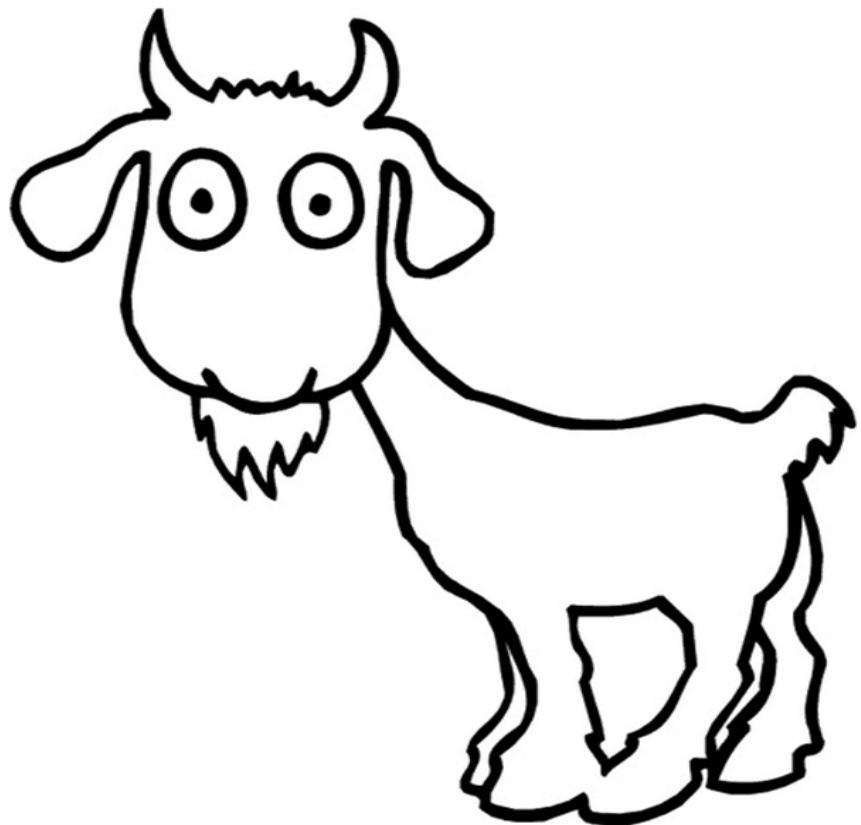
Kids' Page



Kids' Page

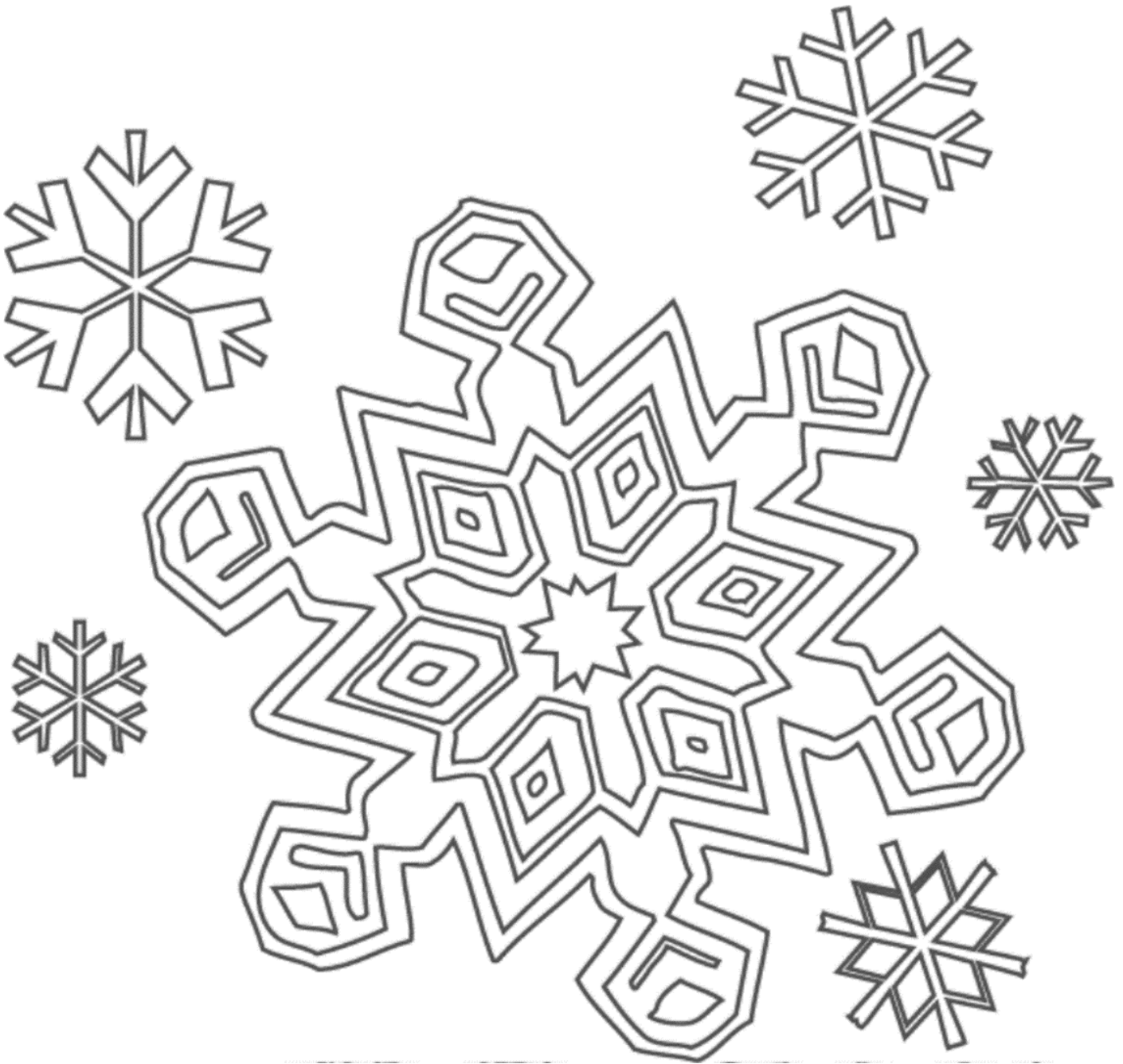


Sheep



Goat

Kids' Page



Snowflakes are like people. We are all different, but together make wonderful things.

What can we make out of snow?



Sunday Soup Supper

Our annual Sunday Soup Supper will be held on Sunday, March 4th at 5 pm. All are welcome to attend.

Bread, salad and desserts are provided, we only need soup donations. If you are ready, willing and able to provide a pot of soup, please complete the following and get it back to me personally, or in my mailbox. (Lyn Wallace) This will allow us to get ready with enough crock pots, labels, etc.

How do you bring in the soup? There are two ways of doing this. If you bring it in the morning, it can be in any container and does not need to be heated. We will make sure it is hot and ready and on the table before everyone arrives. (We have quite a few crock pots here that can be filled and heated.) If not, you can bring it already hot in a crock pot and take it directly to the serving table where a marked space will be available for you.

You do not have to bring soup in order to come and enjoy the evening. Bowls and taste cups will be available for you.

_____ (name) will bring a pot of soup to the Sunday Soup Supper on March 4.

_____ I plan to bring it in the morning

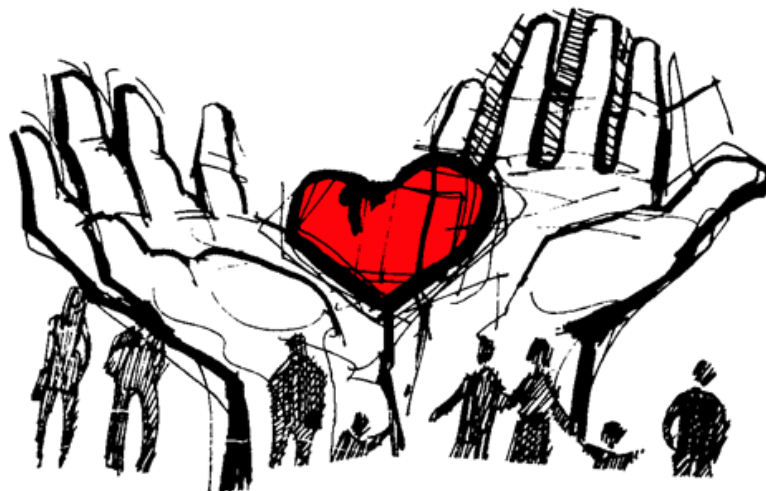
_____ I plan to bring it directly to the dinner

Stewardship Sunday Worship and Luncheon

Please join us for one service at 10am on Sunday 2/18/18 for worship and Stewardship insights from LUMC. The focus will be on the 5 membership vows we make when we join the church. Serving God through our prayers, our presence, our gifts/ talents, our service and our witness.

Witness is newly added, so join us as we provide the background of this update to our vows on the back of this page.

Following worship join us for a luncheon to celebrate our members' stewardship, and LUMC. Menu includes meatball and sausage/pepper sandwiches, chicken salad croissants, and chicken nuggets and macaroni and cheese.



United Methodist Church | What We Believe

By Julie Dwyer
October 2017

As part of The United Methodist Church's Baptismal Covenant, all members promise to faithfully participate in a local congregation through their prayers, presence, gifts, service and witness. But, how can they go beyond the words they profess to actually living into these vows? In a special five-part series, we'll look at each aspect of this membership vow, beginning with prayer, and how United Methodists can answer the call to serve Christ through the local church.

A promise to pray: Honoring our United Methodist vow

<http://www.umc.org/what-we-believe/a-promise-to-pray-honoring-our-united-methodist-vow>

The blessings of presence: Honoring our United Methodist vow

<http://www.umc.org/what-we-believe/the-blessings-of-presence-honoring-our-united-methodist-vow>

Share your gifts: Honoring our United Methodist vow

<http://www.umc.org/what-we-believe/share-your-gifts-honoring-our-united-methodist-vow>

Serving God and others: Honoring our United Methodist vow

<http://www.umc.org/what-we-believe/serving-god-and-others-honoring-our-united-methodist-vow>

What it means to witness: Honoring our United Methodist vow

<http://www.umc.org/what-we-believe/what-it-means-to-witness-honoring-our-united-methodist-vow>



Stewardship: Thanks to all who baked and bought from our Cookie Walk. We raised approximately \$338.00 which will be used towards our Stewardship Sunday Worship and brunch to be scheduled for February 2018. More information to follow



GROCERY and GIFT CARDS

Thank you to everyone who participated in the Gift Card Program. The Grocery Cards are an ongoing program. This year we sold around \$41,000 worth of cards and we received \$2,070 in income.

The Gift Cards that are available just around Christmas time we sold almost \$20,000 worth of cards and we received \$750.00 in income. We will continue to have Grocery Cards each week.

THANK YOU so much for your Christmas gift you sent to UWM! We really appreciate you thinking of us and your partnership with us through prayers and financial gifts!

NOTE FROM ONE OF OUR MISSIONARIES

Greetings to our LUMC church family,

THANK YOU so much for your Christmas gift you sent to UWM! We really appreciate you thinking of us and your partnership with us through prayers and financial gifts!

Thought you might enjoy reading about this peculiar Swedish tradition. Swedes celebrate Christmas on the 24th by having family and friends over to watch Donald Duck cartoons broadcast on TV at 3:00 pm (a very unusual Swedish tradition that you can read about here: http://www.slate.com/articles/arts/culturebox/2009/12/nordic_quack.html) You then have a big meal together, exchange gifts and then the night and Christmas celebration is over by 8:00.

Thank you again for being on our team!

Blessings to you all,

Tony, Gwen, Jensina and Jiana



UNITED METHODIST WOMEN

2nd Tuesday every month - 7:00 P.M. – Fellowship Hall

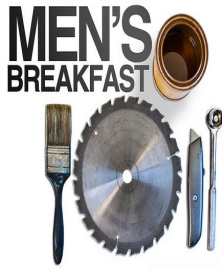
Please join us for our February **United Methodist Women's meeting** on Tuesday February, 13th at 7:00 pm in Fellowship Hall. We will share a "Call to Prayer and Self Denial" program from our new 2018 UMW program book. Brenda Lauble will be our hostess and Debbie Letham will lead our program. This year the theme for our programs will be "Sacred Spaces - Encounters with God and our Neighbors". When we interact with God, we learn something about ourselves and we discover God's purposes for our lives. So too our encounters with people become sacred when we consider that humans bear God's image and are recipients of God's love and grace. God loves deeply. This encounter between God and humanity is sacred and loving.

The LUMC organized unit of United Methodist Women is a community of women whose purpose is to know God and to experience freedom as whole persons through Jesus Christ; to develop a creative, supportive fellowship; and to expand concepts of mission through participation in the global ministries of the church.

Outreach this month is a food donation for the food pantry.



7:00-8:30 a.m.



THURSDAY Mornings at the

Great American Diner

Rte. 1 Langhorne

We meet every Thursday – same time – same place!

All men are welcome!



1st and 4th Saturday of each month

MEN'S MINISTRY (LBE)

CHURCH LOUNGE

8:30 - 10:00 am



**MEN'S PRAYER BREAKFAST &
BIBLE STUDY**

3rd Saturday of each month

Held at: PANERA BREAD

LANGHORNE SQUARE

Our Church Finances
Finance Committee, Chuck Boyle, Chairperson
December 2017

2017 has turned out to be a good year financially for our church. We exceeded expectations and finished with a positive bottom line. Thanks and deep appreciation goes out to our entire church family.

We accumulated excess operating cash this year in the amount of \$25,000. Per the approval of the Administrative Board, \$8,500 of this cash was paid to the Methodist Conference (bringing us up to 85% of the requested apportionment), \$6,500 was paid in bonuses to our valued staff, and \$10,000 was paid into a savings account that is to be used to fund our church's focus on supporting an increase in the new membership of young families.

Outlined for you below are the significant areas of our financial reporting that are coming in differently than what was budgeted for in 2017.

For the 2017 year, on the revenue side our total revenues equaled \$334,300, which is \$7,900 above our budget, but we need to reduce this overage by \$6,000 due to a prepayment of rental income for the parsonage 2 that was paid in 2017 but really applies to 2018. Taking this adjustment into consideration still provides us with a \$1,900 increase over our budgeted income, which is good. The major differences between our budget and actual revenue are noted below:

1. General offerings came in \$900 above the budget.
2. Sunday School Adult offerings are \$400 less than the budget.
3. Thanksgiving offerings came in \$600 above the budget.
4. Christmas offerings came in \$2,100 above the budget.
5. Parsonage 2 rental income came in \$6,000 above budget but this is artificial as a \$6,000 prepayment of the 2018 rent was paid in 2017. This income category really is equal to the budget for 2017.
6. Steeple Kids shared expenses came in \$2,800 under the budget. This is mainly due to lower than expected utility expenses.
7. Sanctuary flower gifting was \$700 less than budget.
8. Wedding income was \$1,100 less than budget.
9. The Wednesday night dinners have generated \$1,100 more than what was budgeted. Not only do we have the opportunity to enjoy a wonderful meal, but we also help support our church.
10. Fellowship & refreshment giving was \$300 less than the budget.
11. Grocery card income was \$200 less than budget.
12. Gift card income was \$300 above budget.
13. One-time donations were \$3,000 more than budgeted.
14. Investment returns from the McKay Fund are \$1,100 less than budget. We have checked with the Trustees and they confirmed that there have not been any changes in the way this fund is invested. This may be a reflection of over budgeting.

On the expense side for the year we reported total expense of \$314,700, which is \$26,700 under our budget. The controlling of our expenses resulted in a good bottom line this year. The hard work of our staff, committees, and congregation made this possible. The major differences between our budget and actual expenses are noted below:

1. Payments to the Methodist Conference were \$6,800 more than the budget. This was due to our decision to make an additional payment at the end of the year because of the availability of excess operating cash.
2. Church picnic expenses were \$200 over the budget.
3. Altar flower expense was \$300 less than the budget.
4. Caring ministry expense was \$500 less than the budget.
5. Youth transportation was \$200 less than the budget.
6. Sunday school expense was \$300 greater than budgeted.
7. The Missions Conference was not held this year resulting in a \$200 reduction in expense.
8. Advertising was \$200 over the budget
9. Pastor compensation is \$15,500 less than the budget due to the change in leadership. This reduction in expense will not carry forward into 2018 because of the cost of health insurance. In 2018 Pastor expense is expected to actually increase by \$2,538 when compared to 2017 actual expense. The 2018 expense though will be \$12,500 less than what our prior Pastor would have earned in 2017 if employed for the full year.
10. Choir director's compensation was \$2,400 less than the budget because this position is vacant. It is still unclear as to if this position will be filled moving forward.
11. Youth director compensation was \$7,700 less than the budget. Our previous Youth Director volunteered to generously donate his services to our church, there was a period of time when we did not employ a new Youth Director, and the new Youth Director's compensation is lower than the prior Director which resulted in this savings. This level of expense reduction will decrease in 2018.
12. All other staff positions showed a compensation increase of approximately \$600 more than budget. This is due to bonuses granted at the end of the year because of the availability of excess operating cash.
13. Sunday lock up expense was \$500 less than the budget. This position was eliminated.
14. Substitute pastor expense was \$250 less than the budget.
15. Social security tax expense was \$500 less than the budget because of a reduction in total staff compensation expenses.
16. Moving expenses for Pastor John were \$800 more than the budget. This expense was not in our 2017 budget.
17. Utility expenses were \$12,200 less than the budget.
18. Office operation expenses were \$1,100 more than the budget, mainly due to purchasing staff email accounts for the next three years.

This leaves us with a 2017 net operating gain of \$19,600 but we need to reduce this gain by \$6,000 to compensate for the prepayment of 2018 rental income on parsonage 2, so our actual gain is \$13,600. Financial stability is challenging to accomplish and maintain. Together, in 2017, we achieved success.

As of the end of 2017 we have \$59,000 in the L.U.M.C. general fund. This provides the financial cushion that we need.

The Reserve Giving Fund continues to grow nicely thanks to our congregation. As of the end of 2017 the balance in this fund is \$11,000.

Faith promise offerings in 2017 were not enough to cover our missionary support expenditures. We had to take \$2,100 from the Faith Promise Reserve Fund to cover this shortfall. An increase in giving was seen in the second half of 2017, but we still see a need. Even a small increase in future individual giving will make a difference. Different members of the mission committee have spoken to us about this during the Sunday services. The unused cash reserve balance as of the end of the year is currently \$5,000.

LANGHORNE UNITED METHODIST CHURCH				
Budget vs. Actuals: 2017 Budget - FY17 P&L				
January - December 2017				
	Total			
	Actual	Budget	over Budget	% of Budget
Revenue				
4100 Income	334,277.29	326,364.00	7,913.29	102.42%
Total Revenue	\$ 334,277.29	\$ 326,364.00	\$ 7,913.29	102.42%
Gross Profit	\$ 334,277.29	\$ 326,364.00	\$ 7,913.29	102.42%
Expenditures				
5100 Administrative Board	35,548.47	28,739.00	6,809.47	123.69%
5200 Council on Ministries	9,384.22	9,850.00	-465.78	95.27%
5700 Staff Parish Relations	185,238.72	207,666.00	-22,427.28	89.20%
5800 Trustees	76,504.22	88,226.00	-11,721.78	86.71%
5900 Business Operations	8,022.04	6,880.00	1,142.04	116.60%
Total Expenditures	\$ 314,697.67	\$ 341,361.00	-\$ 26,663.33	92.19%
Net Operating Revenue	\$ 19,579.62	-\$ 14,997.00	\$ 34,576.62	-130.56%

Our budget for 2018 has been completed. Our budget is similar to our 2017 actual financials with the exception of a few substantiated operating changes. If any member of the church would like to receive a copy of the church's 2018 financial budget and/or detailed 2017 financial reports please place a note in the finance committee mail box outside of the secretary's office.

Thanks to Ron & Louise Cookson for organizing and managing the LUMC Living Nativity. It was another successful year for the church and the community.

Thank you also to all who participated both outdoors and indoors to make it a success!

THANKS TO ALL!

NEW CHURCH OFFICE HOURS

The Church Office will be open:

Monday thru Thursday

9:00 am to 1:00 pm

If you need assistance after hours, please leave a message and we will get back to you, if you need assistance sooner, there is an emergency number where you can reach Pastor Laurie anytime.

Keep current with Langhorne UMC throughout the week by

- 1) Joining us on FaceBook -
<https://www.facebook.com/langhorneumc/>
- 2) Joining us on Twitter -
<https://twitter.com/langhorneumc>
- 3) Receive church emails - send your e-mail to
bill@langhornechurch.org. and say Sign Me Up!



February 1

John Shook, 35 Hollybrooke Drive, Langhorne, PA 19047

February 7

Lynne Gardener, 481 Hulmeville Road, Langhorne, PA 19047

February 13

Kathy DiGregorio, 378 Shady Brook Dr., Langhorne, PA 19047

February 14

Dick Davis, 335 Berkshire Rd., Fairless Hills, PA 19030

Carol Habel, 24 N. Marmic Dr. Holland, PA 18966

February 20

George Jenca, 2701 Southampton Rd., Rm. B109,
Delaware Valley Veterans Home, Philadelphia, PA 19154

February 22

Bob Downs, 64 Digi Farm Lane, Bensalem, PA 19020

February 23

Barb Tomlinson, 561 Clarissa Lane, Penndel, PA 19047

February 26

Rita Cresswell, 2570 Village Rd., Langhorne, PA 19047

Eugene Edwards, 112 National Ave., Langhorne, PA 19047

Langhorne United Methodist Church

301 East Maple Ave., Langhorne PA , (215) 757-4984

lumc-online.org

JOIN US FOR SUNDAY WORSHIP!

Sunday Worship Hours:

9:30 a.m. Traditional Worship

9:30 a.m. Children's Sunday School

10 -11:00 a.m. - Adult Sunday School *

11- 12:00 a.m. - Adult Sunday School *

11:00 a.m. Contemporary Worship

*2 Adult Sunday School Classes being held

pick which time is best for you.



Laurie J. Pfahler, Pastor, laurie@langhornechurch.org

Bill Bryan, Director of Congregational Care, bill@langhornechurch.org

Erika Paton Lay Leader, jerp1968@verizon.net

Donna Goodwin, Church Secretary, church@langhornechurch.org

Anthony Vigile, Contemporary Worship Leader, Anthony@langhornechurch.org

Kerry Fenton, Organist, Kerry@langhornechurch.org

Amy Hansen, Treasurer, amy@langhornechurch.org

Hugh Green, Youth Director, Hugh@langhornechurch.org

Mark Letham, Christ Servant Minister, mrletham@comcast.net

Kim Stockberger, Bell Choir Director, Gs5th@comcast.net

Kurt Tommuscheit, Sexton

Amy Rodda, Steeple Kids Director, steeplekids@comcast.net